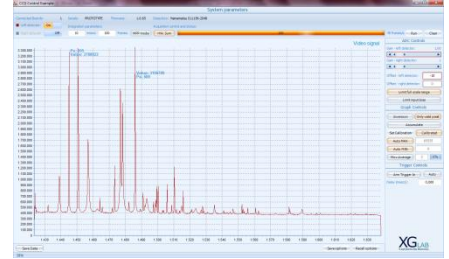


XGL-CCD-1400

CCD Electronics

for multiple linear CCD arrays readout



ALL IN ONE: reads out and controls most common linear CCD arrays



Main features

- ✓ Each board reads up to 2 CCDs
- ✓ Several boards in daisy chain mode: readout of many CCD arrays
- ✓ Hardware Multi-Accumulation up to 64K scans
- ✓ Automatically recognizes the CCD vendor type

Technical Specs

XILINX SPARTAN 6 FPGA – core working at 120MHz
16 bit digital resolution – 2 channels
CDS supported
Date transfer speed: down to 1ms (detector dependent)
On chip storage memory: 64KB RAM, 512KB Flash
64K scans hardware multi-accumulation
Optional storage memory: 64MB DDR
Integration time programmable from 1 μ s to 72min
USB 2.0 connection to PC
Digital I/O: SPI, Trigger IN, up to 80 customizable I/O
Dimensions: 42 mm x 117 mm
Power Supply: \pm 5V
OS supported: Windows XP, Vista, Seven (x32 and x64)
Driver and DLL libraries for integration and control of the system

Detector supported:

Toshiba CCD detectors (TCD-1304)
Hamamatsu back-tinned CCD detectors (S11155-6)
Contact the vendor for other detectors

Do you need custom design for your application?

info@xglab.it

www.xglab.it